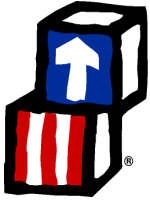


Oklahoma's Head Start Programs



FAQ



What is Head Start?

Head Start provides comprehensive child development services to economically disadvantaged children and families, with a special focus on helping preschoolers develop the early reading and math skills they need to be successful in school. Head Start programs promote school readiness by enhancing the social and cognitive development of children through improved access to educational, health, nutritional, social and other services to enrolled children and their families. Head Start was created in 1965 by the federal government. In 1994, the federal government created Early Head Start to address the comprehensive needs of low-income children under age 3 and pregnant women.

Who oversees the Head Start program?

The U.S. Department of Health and Human Services, Administration for Children and Families (ACF), administers the program through the Office of Head Start. Oklahoma Head Start programs operate under the Region VI ACF office in Dallas, Texas, or under Region XI, the American Indian/Alaska Native program, ACF Office of Head Start in Washington, D.C. ACF issues regulations called Performance Standards. These are mandatory regulations that govern every aspect of the Head Start program. The local grantees are responsible for implementing the standards. Each Head Start and Early Head Start grantee is examined at least every three years by a team of federal monitors to ensure compliance with the regulations.

Who is eligible for Head Start services?

Children and pregnant women from low-income families may be eligible to participate and may be enrolled through a locally established selection process based upon a community needs assessment. The U.S. Department of Health and Human Services annually establishes Poverty Guidelines. Children in foster care or experiencing homelessness, and children with developmental disabilities are also eligible to participate.

2009 HHS Poverty Guidelines

Persons in Family or Household

1						\$10,830
2						\$14,570
3						\$18,310
4						\$22,050
5						\$25,790
6						\$29,530
7						\$33,270
8						\$37,010

For each additional person, add \$3,740

What services and experiences do Head Start programs ensure enrolled children and families receive?

Education Services

- Individualized learning programs
- Evidence and research based curriculum
- Inclusion of children with special needs
- Family literacy activities
- Alignment of curriculum and assessments with public schools

Health Services

- Medical, dental, vision, and hearing screenings & referrals
- Nutrition services
- Health education
- Mental health screening and referrals
- Assistance in establishing a medical and dental home

Family Services

- Links to community resources
- Family goal setting and parenting education
- Leadership opportunities through parent council involvement
- Parent education programs
- Support during transition from Head Start to public schools



How many were enrolled in Oklahoma's Head Start and Early Head Start programs?

	2005	2006	2007	2008	2009
Age 0-1	512	577	525	564	576
Age 1	519	535	564	527	555
Age 2	518	629	688	656	725
Age 3	8,206	8,148	7,917	8,370	8,204
Age 4	10,157	9,633	10,074	9,583	9,402
Age 5 & above	115	129	51	71	283
Total	20,027	19,651	19,819	19,771	19,745
Pregnant Women	162	149	169	175	58



How is Head Start funded in Oklahoma?

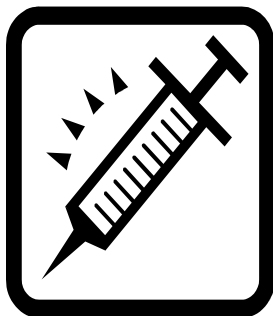
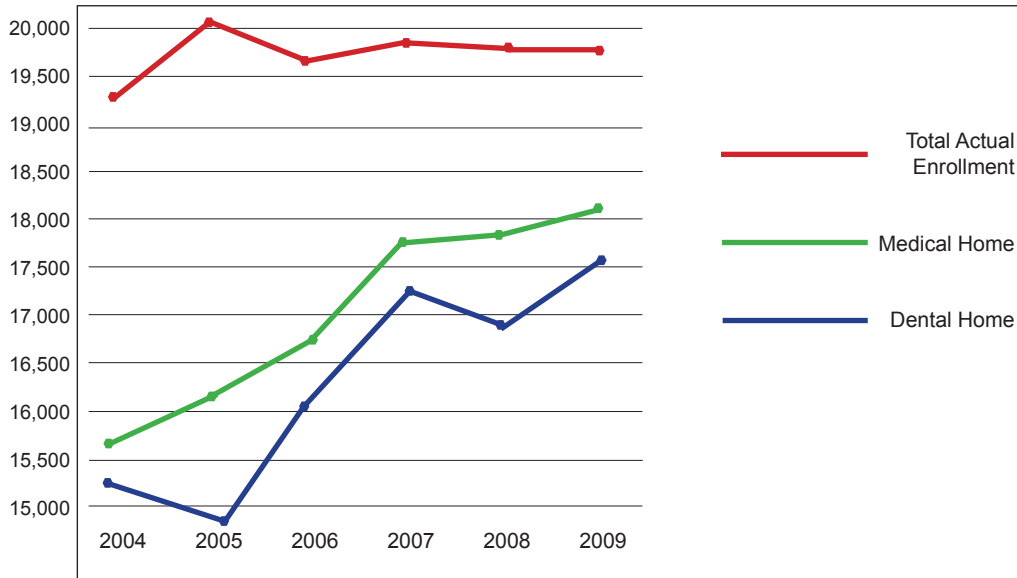
The federal government provides funds directly to the grantees. In Oklahoma, the Legislature also appropriates funds to improve the Head Start programs and expand Head Start enrollment. The figures below include funding to both Head Start and Early Head Start.

Region VI	2005	2006	2007	2008	2009
Federal	\$81,286,272	\$80,064,528	\$80,271,959	\$81,252,571	\$83,703,540
State	\$2,905,620	\$2,905,620	\$2,905,620	\$2,905,620	\$2,685,070
Region XI (American Indian)					
Federal	\$20,615,633	\$20,410,000	\$20,716,000	\$20,903,987	\$23,135,410

What health services are provided to children enrolled in Head Start and Early Head Start?

Children receive a medical screening, are checked for immunizations, and receive an oral health screening. Children are referred for treatment when indicated by results of the screenings. Efforts are made to assist families in obtaining ongoing sources of continuous, accessible medical and dental care.

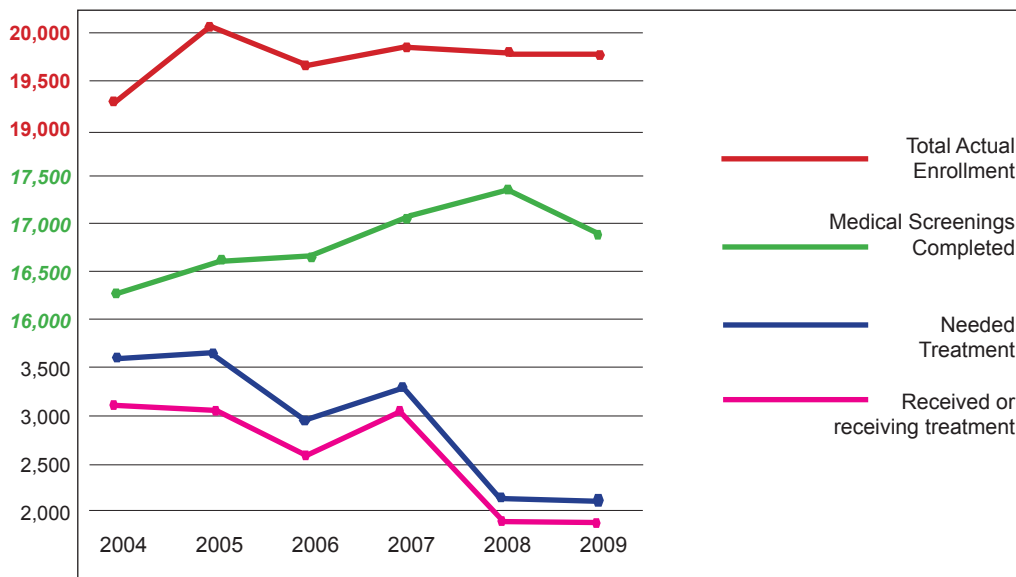
Medical and Dental Home



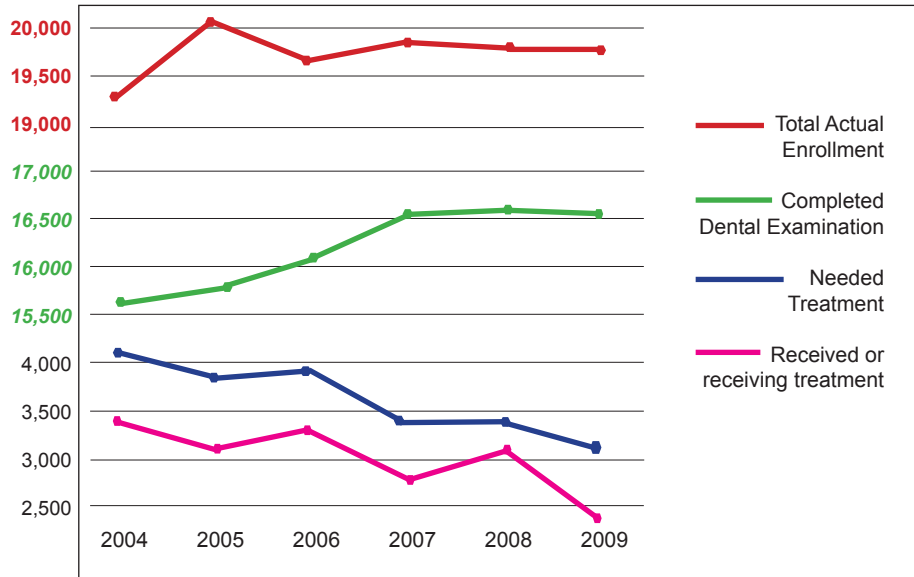
Up-to-Date on Immunizations

	2004	2005	2006	2007	2008	2009
Enrollment	19,363	20,027	19,651	19,819	19,771	19,926
Number Immunized	16,433	16,935	17,086	17,955	17,669	17,641
% of Enrollment	84.87%	84.56%	86.95%	90.59%	89.37%	88.54%

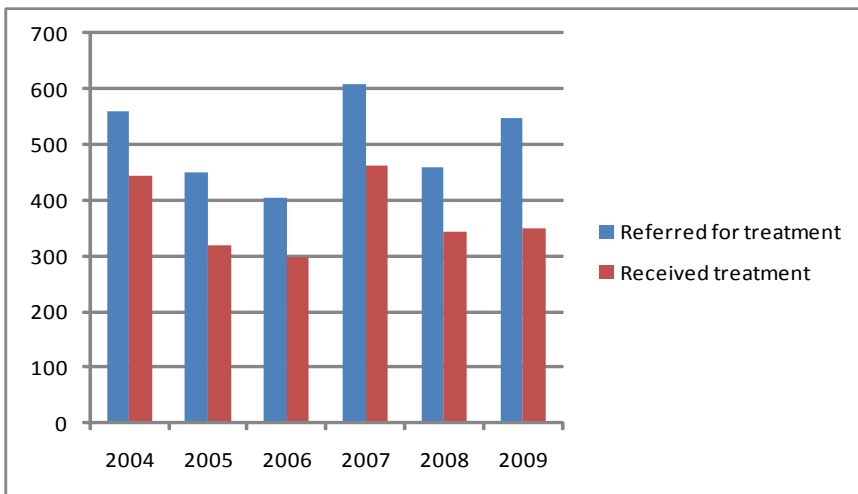
Medical Screenings



Dental Services



Mental Health Services



Family Services in 2008-09

18,598 Families

The number of families who received the following services during the year.

- 2,279 Emergency/crisis intervention (food, clothing, shelter)
- 1,965 Housing assistance (subsidized, utilities, repair)
- 1,583 Mental health services
- 1,189 English as a Second Language training
- 2,187 Adult education (GED program, college selection, etc.)
- 1,232 Substance abuse prevention or treatment
- 1,465 Child abuse and neglect services
- 1,056 Domestic abuse services
- 544 Child support assistance
- 9,388 Health education (including pre-natal education)
- 188 Assistance to families of incarcerated individuals
- 10,252 Parenting education
- 1,310 Marriage education services
- 13,363 Number of families receiving at least one of the services listed above
- 527 Homeless families served
- 228 Homeless families acquired housing
- 2,063 Number of children eligible for special education and related services
- 2,181 Disabilities related services provided to children

What are the qualifications of Oklahoma's Head Start teachers?

Of the 1,178 teachers, 1,100, or 93.38%, had a degree or training that was in early childhood or a related field during the 2008-09 Program Year.

Teachers	Grantees Under Region VI	Grantees Under Region XI American Indian	Total	National
Associate Degree	191 (19.41%)	44 (22.68%)	235	18,663 (33.40%)
Baccalaurate Degree	502 (51.02%)	58 (29.90%)	560	20,591 (36.85%)
Advanced Degree	44 (4.47%)	2 (1.03%)	46	3,824 (6.84%)
Child Development Associate (CDA)	191 (19.41%)	78 (40.21%)	269	10,170 (18.20%)
No Credential	56 (5.69%)	12 (6.19%)	68	2,622 (4.69%)
Total	984	194	1,178	55,870

Head Start Grantees in Oklahoma

Community Action Agencies

Big Five Community Services (HS)
(580) 924-5331

**Community Action Agency of Oklahoma City and Oklahoma/
Canadian Counties (HS)**
(405) 232-0199

Community Action Development Corporation
(580) 335-5588 (HS)

Community Action Project of Tulsa County (HS/EHS)
(918) 382-3256

Community Action Resource & Development, Inc. (HS/EHS)
(918) 341-5000

Cookson Hills Community Action Foundation (HS)
(918) 696-8723

Delta Community Action Foundation (HS)
(405) 756-1100

INCA Community Services (HS)
(580) 371-2352

KI BOIS Community Action Foundation (HS)
(918) 967-3325

Little Dixie Community Action Agency (HS/EHS)
(580) 326-3351

Northeast Oklahoma Community Action Agency (HS)
(918) 253-4683

Opportunities, Inc. (HS)
(580) 623-7283

Southwest Oklahoma Community Action Group (HS)
(580) 482-5040

United Community Action Program (HS/EHS)
(918) 762-3041

Washita Valley Community Action Council (HS)
(405) 224-5831

American Indian

Caddo Nation Child Development Program (HS)
(405) 247-6266

Central Tribes of the Shawnee Area Inc. (HS/EHS)
(405) 275-4870

Cherokee Nation Head Start (HS/EHS)
(918) 458-4393

Cheyenne-Arapaho Head Start (HS)
(405) 422-7635

The Chickasaw Nation Head Start (HS)
(580) 436-7276

Choctaw Nation of Oklahoma (HS)
(580) 924-8280

Iowa Tribe of Oklahoma (EHS)
(405) 547-5826

Kickapoo Head Start, Inc. (HS)
(405) 964-3676

Kiowa Tribe Head Start (HS)
(580) 654-2300

**Muscogee (Creek) Nation Head Start
Program (HS)**
(918) 732-7898

Osage Nation Head Start (HS)
(918) 287-5462

Otoe-Missouria Head Start (HS)
(580) 723-4466

Ponca Tribe Head Start (HS)
(580) 762-7927

Seminole Nation Early Childhood Services (HS/EHS)
(405) 382-4106

**University of Oklahoma American Indian Institute Early Head
Start (EHS)**
(405) 598-6094

Other Grantees

Crossroads Youth & Family Services (HS/EHS)
(405) 292-6440

Crossroads Youth & Family Services (Lawton) (HS/EHS)
(580) 248-0474

**Green Country Behavioral Health Services, Inc. - Muskogee
County Head Start (HS/EHS)**
(918) 687-6611

Native American Coalition of Tulsa (HS)
(918) 446-7939

HS - Head Start EHS - Early Head Start

Sunbeam Family Services Early Head Start (EHS)
(405) 528-7724 x225

Twin Rivers Head Start (HS)
(918) 623-2707

Wewoka Public Schools Co-op Head Start (HS)
(405) 257-2321

Compiled by
Oklahoma Association of Community Action Agencies
2800 N.W. 36th St., Suite 221
Oklahoma City, OK 73112
(405) 949-1495 www.okacaa.org

Head Start Grantees in Oklahoma

